



Custom
Sizes

Makes 100 Troches & Lozenges

- Hole Volume 0.63ml or 725mg Polyethylene Glycol 1450.
- Plates are precision machined to prevent solution leakage.
- For long life, plates are made from hard anodized aluminum with Inox 316 (stainless steel) helicoil screw thread inserts and use screws that do not fall out.
- Anodized parts discolor in automatic dishwashers and are engraved not for dishwasher use to prevent operator error.
- Plastic storage case included to protect plates from damage.

Visit www.torpac.com for more information

Instruction Overview



1. Prepare mixture and pour into holes. Let settle for 20 minutes then scrape excess mixture using a hard rubber spatula.
2. Place mold in refrigerator to harden. Remove and unscrew two plates. Lift top plate to remove lozenges from mold.
3. Use fingers to eject any stuck lozenges.

Specifications & Ordering

Item #	X-TLM
Generic Name	"750 mg"
Hole Volume	0.63ml
Hole Diameter	0.500" (12.7mm)
Hole Height	0.196" (5.0mm)
Troches / Lozenge Weight	725 mg using Polyethylene Glycol 1450
Mold Dimensions inches	12.5 x 6.0 x 0.6
Mold Dimensions cms	31.6 x 15.2 x 1.45
Mold Weight	3.75 lbs (1.7kg)
Price	\$415.00

Formulas

For more information on making Troches (lozenges) visit <http://www.torpac.com/tlm>

Cleaning on reverse

ProMolds by ProFiller

Designed & Manufactured by:



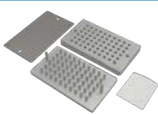
ProMold TTM



ProMold RDTM



ProMold RMS



ProMold ATM

TORPAC®

www.torpac.com
info37@torpac.com

US - T: +1-973-244-1125 F: +1-973-244-1365
333 US 46, Fairfield, NJ 07004, USA

EU - T: +31-6-30-93-65-27
Jan Campertstraat 19, 6416 SG Heerlen,
The Netherlands.

Cleaning

Remove the thumb screws to disassemble Mold Plate from Base Plate before cleaning.

Automatic Dishwasher Restrictions: Anodized aluminum (both silver & hard anodized) may be cleaned in an automatic dishwasher on rinse cycle only. Automatic dishwasher detergents can discolor anodized aluminum.

Cleaning Agents: We recommend household dishwashing liquid. Do not use acidic, caustic or abrasive cleaning materials.

Cleaning Wipes: Do not use abrasive cloth or steel wool. Use only soft cloths, sponges, plastic brushes, or nylon pads.

Isopropyl Alcohol Cleaning or Drying: May be cleaned with isopropyl alcohol. Wipe with a cloth dipped in isopropyl alcohol, then immediately wipe dry with a clean cloth.

Hot Air Drying: May be dried in a hot air oven or using a portable hair dryer

Autoclave: Metal parts are autoclave safe.



ProFiller®

Hand-Held systems in 100, 120 & 300 holes



1100



1120



3600



Bench-Top Filler
300 holes



Choose your
Orienter



Hand-Held Orienter
3700 / 3700OE



European Style
Orienter 3800



Automatic
Orienter X900

Fastest & easiest to use capsule filling systems. Output from 2000-14000 capsules/hour in sizes 000-5, 00el-2el and AAA-D.

ProMixer™

Mixers from 130ml to 10L. A 3-Axis 2L manual shaker-mixer that uses rotation, translation and inversion. Motor driven mixers in two sizes and a selection of drum and V-shells.



3-Axis Mixer



750



10L



V-Shells
220ml-5L



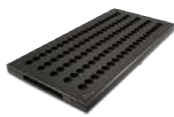
Drum Shell
130ml-10L

ProMold™

Anodized Aluminum molds. Available in standard & custom sizes.



TTM
Tablet & Triturate



TLM
Troche & Lozenge



RDTM
Rapid Dissolve Tablet



RSM
Rocket Suppository

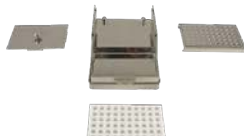


ATM
Animal Treat

Other Equipment



ProTRM™
Three Roll
Ointment Mill



ProCoater™
For enteric film & coating
of capsules & caplets



ProFunnel™
Funnel for precision
capsule filling on a balance



ProCounters
Divide 300 capsules into
batches of 30, 60 or 100