



Contact US  
for USA  
Introductory  
Pricing

Visit [www.torpac.com](http://www.torpac.com) for more information

Three roll mills reduce particle size in ointments, creams, pastes, gels, and suspensions. Smaller and more uniform particles mean more active ingredient surface area, maximizing treatment benefit.

### Upgraded Design

- Improved Roller Gap setting:
  - 7 settings to support effective milling of particle sizes within range of 10-250 microns (µm).
  - Setting resists change during use.
  - Fine/coarse direction arrows to guide user for appropriate setting.
- Roller Guide Lock Bolts prevent Roller Guides from moving during use.
- Scraper mounting improved for a narrower & more uniform gap between Scraper and Rollers.
- Large 180-watt motor crushes hard particles.
- Product Tray & Splash Trays included.
- Higher capacity 1250ml Hopper.
- Scraper from UHMWPE (for long life).
- No lubrication required for nylon gears.
- Precision manufacturing & assembly the ProFiller® brand is known for.

### Upgraded Safety

- Rollers stop when any hard object is accidentally inserted to avoid damage to Rollers & object.
- Safety Bar included to avoid injury to fingers during cleaning.

### Upgraded Cleaning

- Inox (stainless steel) housing for easy cleaning and no discoloration with age.
- Splash Tray below rollers included.

Compared  
to Exakt®  
Classic 50

### Specifications

Mill Dimensions*	10.2 x 16.3 x 14.8 in	26.0 x 41.5 x 37.5 cm
Net Weight	40 lbs	18 kgs
Packed Dimensions	21 x 18.3 x 14.6 in	53.0 x 46.5 x 37.0 cm
Packed Weight	51 lbs	23 kgs

\*including Hopper & Scraper mounted

### Item #

### Votl /Hz

MM1P TRM 16	110-130V / 60Hz
MM1P TRM 25	220-240V / 50Hz
MM1P TRM 26	220-240V / 60Hz
Price	\$4750.00

### Materials of Construction on reverse

### Other Equipment



ProFiller 1100



ProFiller 3700



ProMixer 10L



ProMold TTM

### Designed & Manufactured by:

## TORPAC®

[www.torpac.com](http://www.torpac.com)  
[info37@torpac.com](mailto:info37@torpac.com)

US - T: +1-973-244-1125 F: +1-973-244-1365  
333 US 46, Fairfield, NJ 07004, USA

EU - T: +31-6-30-93-65-27  
Jan Campertstraat 19, 6416 SG Heerlen,  
The Netherlands.

## Materials of Construction:

Roller Material: Durable Ceramic Rollers made from 99.7% purity Aluminum Oxide

Scraper: UHMWPE (ultra high molecular weight polyethylene)

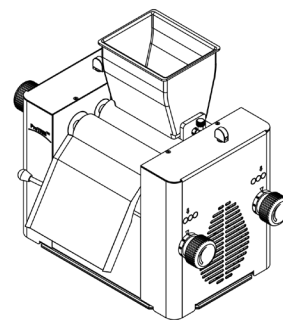
Roller Guides: UHMWPE (ultra high molecular weight polyethylene)

Hopper: HIPS (high impact polystyrene)

Splash Tray: HIPS (high impact polystyrene)

Product Tray: HIPS (high impact polystyrene)

Safety Bar: Inox (Stainless steel) 316



## ProFiller®

Hand-Held systems in 100, 120 & 300 holes



1100



1120



3600



Bench-Top Filler  
300 holes



Choose your Orienter



Hand-Held Orienter  
3700 / 3700OE



European Style Orienter  
3800



Automatic Orienter  
X900

Fastest & easiest to use capsule filling systems. Output from 2000-14000 capsules/hour in sizes 000-5, 00el-2el and AAA-D.

## ProMixer™

Mixers from 130ml to 10L. A 3-Axis 2L manual shaker-mixer that uses rotation, translation and inversion. Motor driven mixers in two sizes and a selection of drum and V-shells.



3-Axis Mixer



750



10L



V-Shells  
220ml-5L



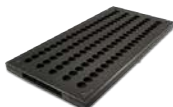
Drum Shell  
130ml-10L

## ProMold™

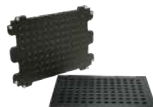
Anodized Aluminum molds. Available in standard & custom sizes.



TTM  
Tablet & Triturate



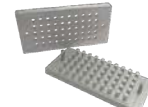
TLM  
Troche & Lozenge



RDTM  
Rapid Dissolve Tablet



RSM  
Rocket Suppository

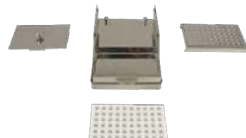


ATM  
Animal Treat

## Other Equipment



ProTRM™  
Three Roll  
Ointment Mill



ProCoater™  
For enteric film & coating  
of capsules & caplets



ProFunnel™  
Funnel for precision  
capsule filling on a balance



ProCounters  
Divide 300 capsules into  
batches of 30, 60 or 100